



Updown Hill, Windlesham

£275,000



Updown Hill, Windlesham

A luxury one bedroom, first floor apartment built by Runneymede Homes around four years ago finished to a superb standard with a modern contemporary feel.

FEATURES

- First Floor
- Security entry system
- Siemens appliances
- Instant hot water tap
- Underfloor heating
- 'A' rated condenser boiler
- Amtico spacia flooring and luxury carpets
- Security alarm
- Double glazing

ACCOMMODATION

- Impressive open plan sitting room
- Contemporary modern fitted kitchen
- Bedroom with fitted wardrobes
- Bathroom with Minoli Italian tiles

LOCAL AUTHORITY

Surrey Heath

EPC RATING

B

LEASE INFORMATION

- Lease remaining: TBC
- Ground rent: £250 per year
- Service charge: £50 per month





Dairy Mews

Approximate Gross Internal Area = 49 sq m / 528 sq ft

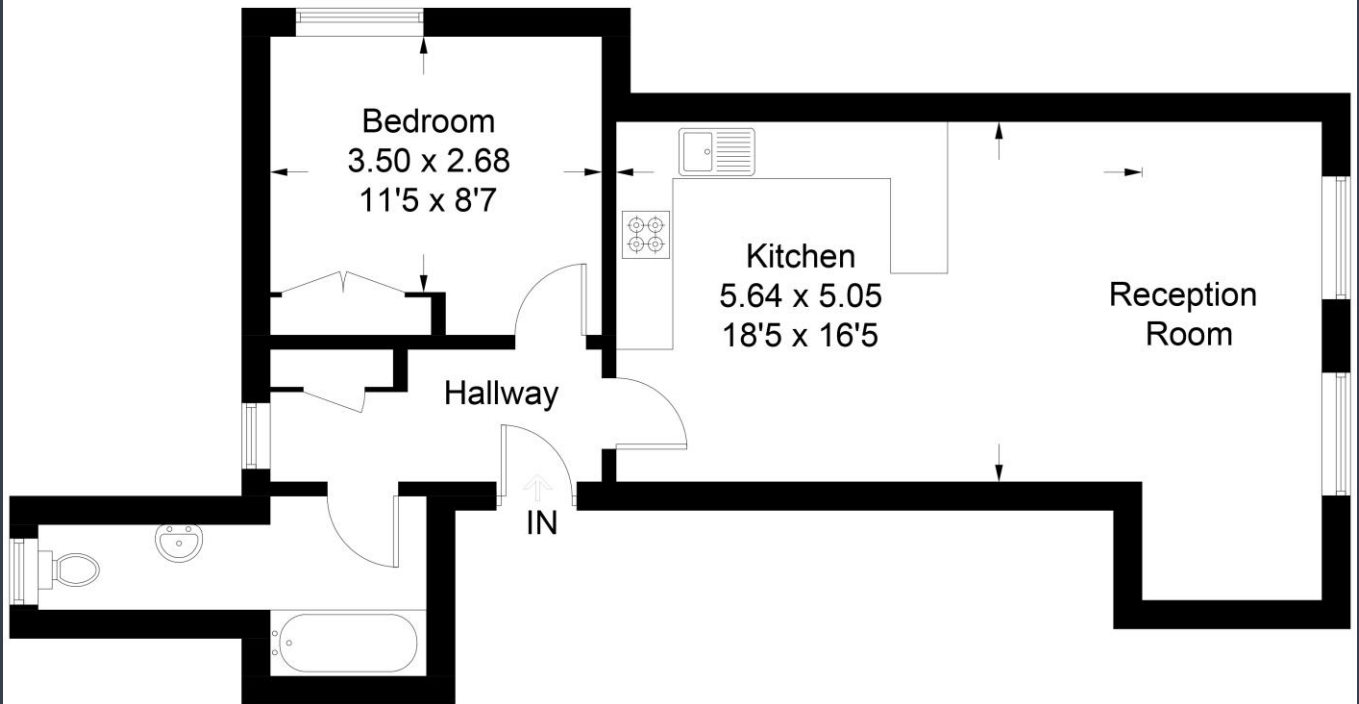


Illustration for identification purposes only, measurements are approximate, not to scale. floorplansUsketch.com © (ID432164)

Disclaimer: We wish to inform prospective purchasers that we have prepared these sales particulars as a general guide. We have not carried out a detailed survey, nor tested the services, appliances and specific fittings. Room sizes are approximate and rounded: they are taken between internal wall surfaces and therefore include cupboards / shelves, etc. Accordingly, they should not be relied upon for carpeting, curtains / blinds and kitchen equipment, whether fitted or not, are deemed removable by the vendor unless specifically itemized within these. **N.B photos shown were taken in 2018**

Postcode for sat nav: GU20 6AF



The Old Dairy, 7 Updown Hill, Windlesham, Surrey GU20 6AF
enquiries@newtonrowe.co.uk | 01276 986900